

Stage technical sheet & touring requirements for Quartet

Contact: contact@sundrifeeling.com gsm: +262 692704637 (GTM+4)

1/3



Patch	Instrument	Mic Type / model	Power	Stand
1	KK in	Beta 91		
2	SN	SM57 / Audix 15		Small
3	HH	SM81		
4	T1	E 904		Small
5	T Bass	E 904		Small
6	Oh L	KM184		Tall
7	Oh R	KM184		Tall
8	Urdu	RE20 + M88 + SM57		Small
9	BASS Di	DI BSS AR 133 + Jack	220V	Tall
10	Kayamb	SM57		Small
11	Keyboards L	DI BSS AR 133 + Jack		Small
12	Keyboards R	DI BSS AR 133 + Jack		
13	Voc Keyboards	SM58		Tall
14	Voc Bass	SM58		Tall
15	Voc Drums	SM58		Tall
16	Lead Voc	1 Sennheiser 58358 / Shure Beta 87A / HF		Tall
17	Spare Lead Voc			

Stage Equipment Required from the Concert Venue

- Smooth dance floor 20x15 ft (6x4 m)
- 5 monitors incl 2 for lead singer
- 1 microphone for lead singer : Sennheiser 58358 / or Equivalent Wireless mic / or Shure Beta 87A
- 4 microphone and mic. stands for Drummer, Bass and Keyboard players backing vocals
- Piano if available
or Electric piano (for shows outside Reunion Island)
Heavy 88 touch keyboard with a piano sound, preferably Yamaha Kawai or Kurzweil or Nord Stage
- Keyboard stand with light
- Piano seat with adjustable height (no drummer's seat)
- Keyboard sustain pedal as picture below
- Combo for Bass guitar : Ampli type : Ampeg SVT / Gallien + HP 4 X10 Minimum
- Full Drummer's kit : DW ECO X. Floor mat, Kick, Snare, Hat, 2 Tom 12-16, Cymbals kit (1HH + 2 Crash 14 & 16 + 1 Splash 10 + 1 Ride) + 4 cymbals stand + 1 HH stand
- 1 **Urdu** for Drummer's kit
- 1 Bass guitar Stand
- 1 low mic stand for singer's Kayamb
- 1 low mic stand for drummer's 2nd spot with Urdu and backing vocals
- 4 Stands
- 2 tall stable bar stools without arms
- electric plugs for Bass, Keyboard and Drummer

Audio Mix Requirements

(For performances without Sundri Feeling technician)

- Standard clear vocal sound with reverb
- Musicians require stage access of at least 1/2hr for soundcheck (max. 45mn)
- Our technicians (if present) require access to stage and control booth at least 1hr prior to performance

Merchandising booth

- 1 table covered with black sheet and 1 light

- Preferred kind of Keyboard sustain pedal (rather than square plastic pedal)



Stage technical sheet & touring requirements for quartet

Contact: contact@sundrifeeling.com gsm: +262 692704637 (GTM+4)

2/3

Sundri
Feeling
Pop World Jazz
Reunion Island



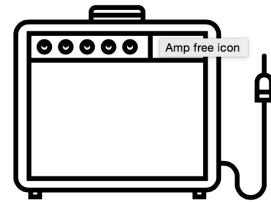
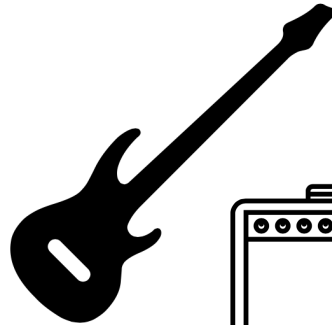
Monitor



Piano or Keyboard
+ Vocals



2 Power source



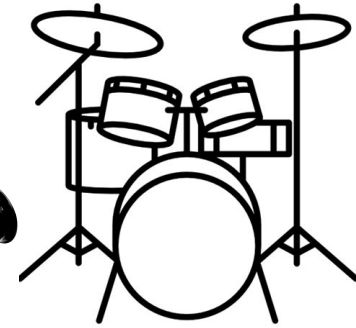
Guitar bass & Amp + Vocals



2 Power source



Monitor



Drums + Urdu
+ Kayamb + Vocals

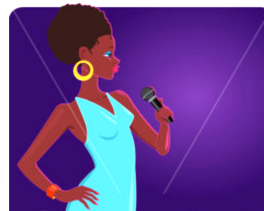


2 Power source



Monitor

Monitor



Vocals & Dance
+ Kayamb



Monitor



Stage Front

Stage technical sheet & touring requirements for quartet

Contact: contact@sundrifeeling.com gsm: +262 692704637 (GTM+4)

3/3



Sound System preferences

A homogeneous sound system should allow to understand the lyrics at any point of the public, according to the room and the number of seats. A sound Stack on each side of the stage + front fills are appreciated. Preferably Meyer Sound or Adamson or L-Acoustics.

The placement of the system should not hide the stage.

Facade Sound preference : 1 digital console 24 In 12 Out minimum. Digico / Studer / Allen & Heath / Digidesign / Yamaha (CI Serie)

Lighting Plan

We will be able to provide a lighting plan adapted to our set list and according to your venue size, to be discussed with your lighting engineer.

Musicians & Instruments

- Sundri : Lead vocals, Kayamb, Dance
- Jérôme Vaccari : Piano & Keyboards, Vocals
- Mishko M'Ba : Guitar Bass, Vocals
- Frank Paco : Drums, Urdu, Vocals

Touring Requirements and Rider

- Touring party usually includes 4 artists on stage, plus 1 manager and 1 technician.
 - Accommodation requires 1 double room, plus 4 single rooms.
- Minimum of 3 star rating. Guest house accommodation is accepted. Non smoking rooms.
- 2 Backstage dressing rooms with sink and 6 towels
 - Beverage Rider: 6 x bottles of still water, honey, fruit juice, tea/ginger herbal hot tea & coffee.
 - Food Rider: Please prepare a catering (hot or cold lunch) including fresh fruits, for 6 people, available until the final session of the band.
- Special request for the singer : Vegan diet. Eggs and sea food are accepted. No meat please. Fresh and dry fruits and nuts, lemon, ginger and turmeric, gluten free bread, goat cheese and hot herbal tea are very welcome.

PLEASE ADVISE Sundri *Feeling* IF YOU ARE UNABLE
TO PROVIDE ANY OF THESE ITEMS OR SERVICES.